

M2 BASIC HIGH SPEED DOORS

CRASH FORGIVING & AUTOMATICALLY REPAIRABLE



M2 BASIC
HIGH SPEED DOORS

Designed for interior and exterior use.

***DYNACO is a unique “patented” concept offering:
The safest, fastest, best sealing doors, with the
lowest maintenance cost in the industry.***



M2 BASIC Designed for up to 100 cycles per day in an interior or exterior environment .

Maximum dimensions: W 12' x H 12'

Resists to and operates under pressures up to:

Width (ft.)	UP TO 7'	8'	9'	10'	11'	12'
Pressure (lbs./sq.ft.)	23.89	20.90	18.58	16.72	15.20	13.93
Wind speed* (mph)	95	90	85	80	75	72.5

*Wind speed is indicative, not including any multiplication coefficients taking into account the configuration of the building.

DESCRIPTION

STANDARD OPERATING SPEED: 24"/sec.

OPERATING TYPE: gear driven, push-pull movement.

SIDE GUIDE made of structural channels of 3 5/16" x 2" x 1/8" in galvanized steel.

INNER SIDE GUIDE in polyethylene (PE-UHMW 1000); outer section 1/2" x 13/16", fixed at the base of the structural channels with springs. This means that the door curtain is stretched between its side guides.

DRUM in steel, diameter 4" x 0.078", shafts in steel.

DOOR CURTAIN in very resistant PVC (27 oz/sq. yd). Available in different colors and provided with side sealing zippers; soft bottom edge design.

MOTOR: 1/2 HP-60 HZ continuous industrial motor. (HP may vary with door size)

MOTOR COVER: optional.

CONTROL CIRCUIT: electronic control board with 5V logic. Options included: B2, E2 wiring, timer to close, mid-stop, delay on reverse, maximum run timer.

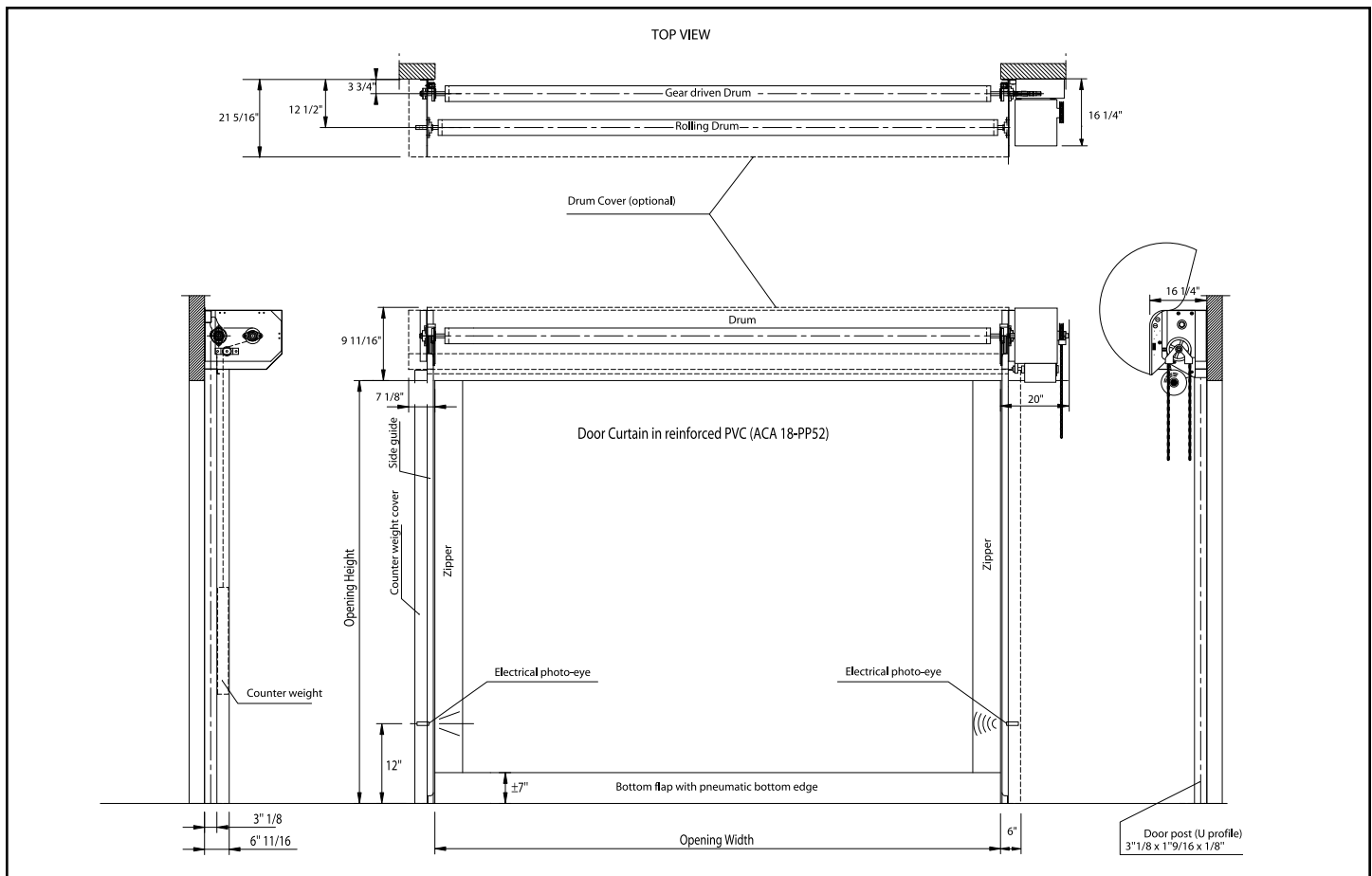
OPERATOR manufactured by MANARAS: Opera-H-Jackshaft Operator with industrial duty

motor for up to 25 cycles/hour or 100 cycles/day. Electronic control board supplied with floor level disconnect for manual operation.

DETECTORS: An infrared photocell, detecting the presence of a pedestrian or a vehicle, immediately opens the door and keeps it open as long as the presence is detected. Height of the photocell: 12" from the floor (optionally up to maximum 24" upon request). A bottom edge detector opens the door when it hits an obstacle during the closing cycle. This detector is positioned in the bottom part of the curtain.

POWER SUPPLY: Standard: 115 VAC. Optional single phase 208-230 VAC, three phase 208 VAC, three phase 460 VAC, three phase 575 VAC. Frequency: 60 Hz. Circuit protection to be provided by the customer: 8A for 115/1/60, 4A for 230/1/60, 2.1A for 208/3/60, 1A for 460/3/60, 0.8A for 575/3/60.

SPACE REQUIREMENTS: All indicated dimensions are net: the space necessary for mounting and maintenance has to be provided. Reduced dimensions: upon request.



Within the framework of its policy of continuous development of its products, DYNACO reserves the right to modify the characteristics of its products and parts without prior notice.



The Leader in Door Safety and Design



DYNACO USA Order Form

Customer:

Door Reference:

Production Number:

GENERAL INFO

Invoice address (customer or DYNACO Dealer) :

COMPANY: Phone:
Contact name: Fax:
Address:
City: State: Zip Code:

END USER INFO

End user (if not the same as the invoice address) :

COMPANY: Phone:
Activity:
Contact name: Fax:
Address:
City: State: Zip Code:

DELIVERY INFO

Delivery address (if not the same as the end user address) :

COMPANY: Phone:
Contact name: Fax:
Address:
City: State: Zip Code:

INSTALLATION

Installation (if not by DYNACO Dealer) :

COMPANY: Phone:
Contact name: Fax:
Address:
City: State: Zip Code:

TIMING

Expected installation date:

Expected delivery time:

Within the framework of its policy of continuous development of its products, DYNACO preserves the right to modify the characteristics of its products and parts without preceding notice.

DYNACO. THE SAFEST CHOICE

DYNACO USA, Inc
3175 Mac Arthur Blvd.
Northbrook, IL 60062

Tel. (847) 562-4910 Fax (847) 562-4917
Web: www.dynacodoor.us
E-mail : dynaco@dynacodoor.us